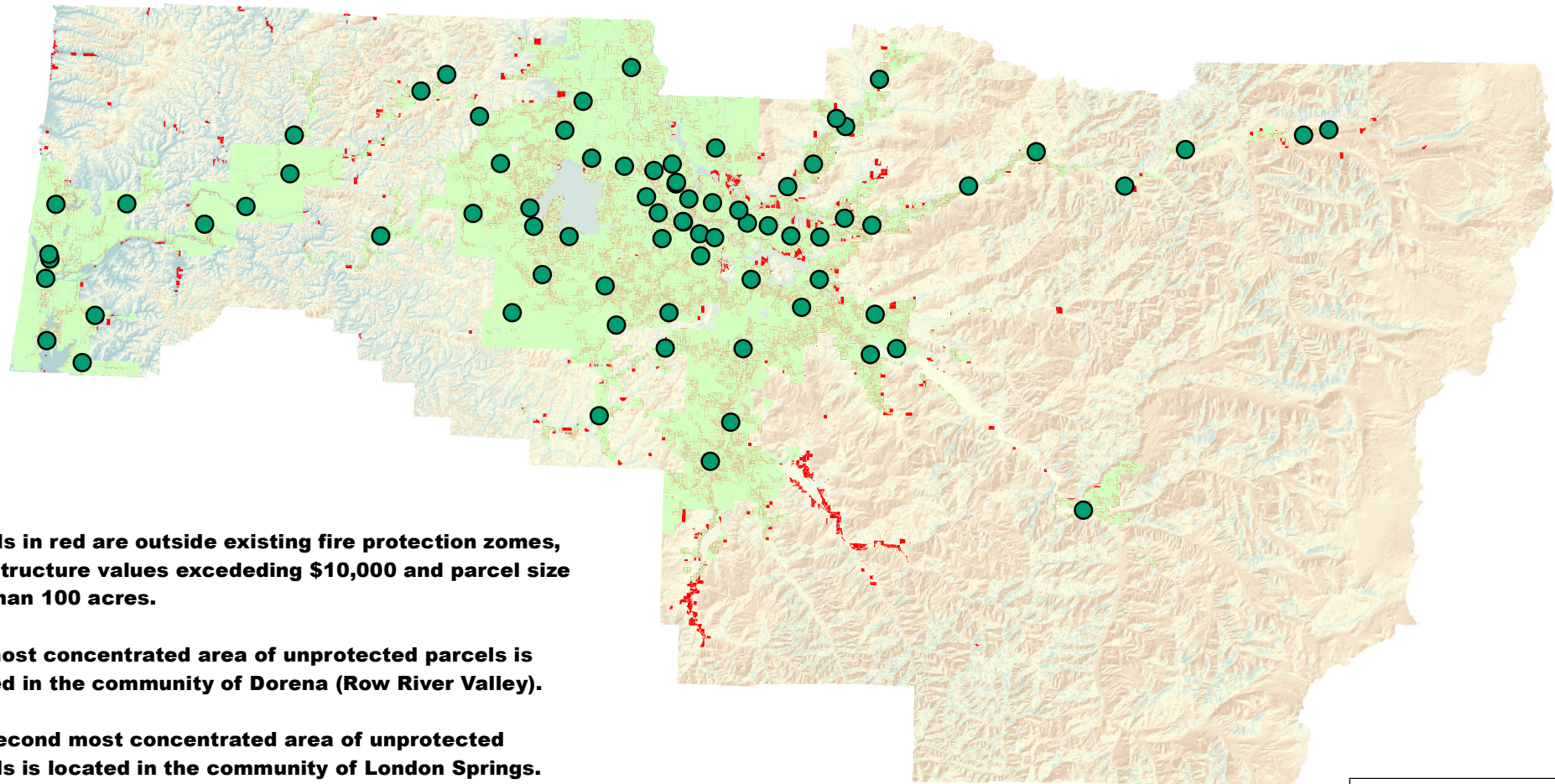


# PROPOSED ROW RIVER VALLEY FIRE DISTRICT (MAP 1) LANE COUNTY PARCELS WITH GREATER THAN \$10,000 STRUCTURE VALUE OUTSIDE FIRE PROTECTION DISTRICTS



**Parcels in red are outside existing fire protection zones, with structure values exceeding \$10,000 and parcel size less than 100 acres.**

**The most concentrated area of unprotected parcels is located in the community of Dorena (Row River Valley).**

**The second most concentrated area of unprotected parcels is located in the community of London Springs.**

**In addition to lacking jurisdictional fire protection, both Dorena and London Springs are most remote from existing fire stations and importantly are situated in 'one way in / one way out' valleys with distant fire response access and extremely vulnerable evacuation routes.**

**Legend**

- LC\_Fire\_Stations
- Parcels\_In\_Fire\_District
- Imprv\_10K\_less than 100 acres

**HS\_DEM\_LaneCounty.tif**

**Value**

- High : 255
- Low : 6

